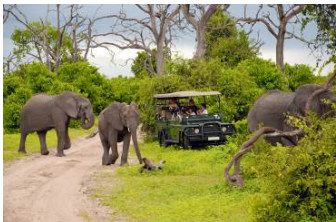
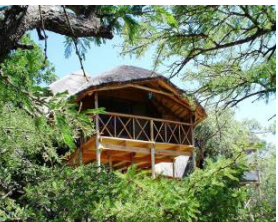
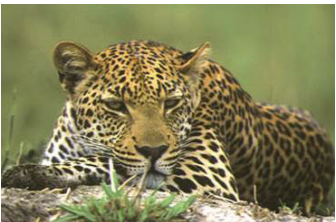




DETOUR AFRICA



5 Day Kruger Luxury Treehouse Safari



HIGHLIGHTS

- Return Transfers to and From Johannesburg
- Big Five game drive
- Kruger National Park
- Sundowner at waterhole and thrilling evening game drive
- Morning walk escorted by qualified rangers
- Three Rondawels overlooking Blyde River Canyon and Gods Window

ITINERARY

5 Days

DAY 1

We depart Johannesburg and travel east to the Mpumalanga province – home to the Kruger Park. The conditions are ideal for wildlife and besides the Kruger Park there are many private game reserves, making the area ideal for safaris. Our accommodation is semi – luxury tree houses. These comfortable unique tree houses provide an excellent base from which to explore the Kruger and surrounds. Once we have settled we board open game viewing vehicles and head off on our first safari. This afternoon/sunset game drive takes place on a private reserve and is home to the Big 5 and offers great game viewing. Returning in the early evening, we keep a lookout for nocturnal animals before enjoying dinner under the stars.

Accommodation: Luxury en-suite Treehouses
Meals included: Dinner

DAY 2

An exciting day begins at sunrise as we transfer to the Kruger Park and enter the gates as they open. Early morning is an ideal time for viewing wildlife and the knowledgeable guide will ensure that we get to see as many animals as possible. Breakfast is enjoyed at one of the designated picnic sights. We spend the rest of the morning exploring the Kruger searching for the Big 5 and other animals. We take a welcome lunch break and time to relax for a while

during the midday heat. Our safari continues until the late afternoon when we return to our lodge to enjoy dinner around a log fire in the traditional boma. Note that all game drives are conducted in open 4x4 vehicles providing for excellent photographic opportunities – have your cameras ready.

Accommodation: *Luxury en-suite Treehouses*

Meals included: *Breakfast, Dinner*

DAY 3

We depart the Lodge and make our way up the Drakensberg Escarpment. Our journey takes us along the Panoramic Route, some of the most stunning scenery South Africa has to offer. The sights en-route include; Gods Window, Bourke's Luck Potholes, Three Rondawels and the magnificent Blyde River Canyon. After a full day of exploring we return to the Lodge and relax around the fire listening to the night sounds of Africa.

Accommodation: *Luxury en-suite Treehouses*

Meals included: *Breakfast, Dinner*

DAY 4

After 3 exciting days we have a free day where clients can decide what they would like to do... some time off relaxing at the lodge or taking part in the various optional activities on offer.

Below is some options should you like to partake, and the relevant costs. In busy seasons it would be a good idea to book these activities in advance with your reservations consultant.

Optional Activities are subject to availability – The below prices are only available to advance bookings, should you book locally the rates can be higher and do change seasonally.

Kruger National Park Day Trip – ZAR 935 pp

(Another full day in the Kruger National Park on an open 4 x4 Game viewing vehicle, more opportunity to get wildlife sightings and photos. Included Breakfast picnic packed by the lodge. Excludes Lunch)

Full Day Panoramic Route – ZAR 935 pp

(Includes a full day drive along the panorama route taking in Three Rondavels, Bourke's Luck Potholes, Lisbon Falls, God's Window and Pilgrim's Rest.- excludes: lunch and drinks)

Accommodation: *Luxury en-suite Treehouses*

Meals included: *Breakfast, Dinner*

Optional Activities: *As above*

DAY 5

After an early morning wake-up we venture out on a morning nature walk, escorted by qualified rangers, we get skilled in nature's finer details like bird, tree and spoor identification. We enjoy brunch at the lodge prior to driving along the Drakensberg Escarpment to view the impressive Three Rondawels overlooking the Blyde River Canyon. Thereafter we continue our journey to Johannesburg arriving late afternoon.

Meals included: *Breakfast*

Tour Information

ACCOMMODATION:

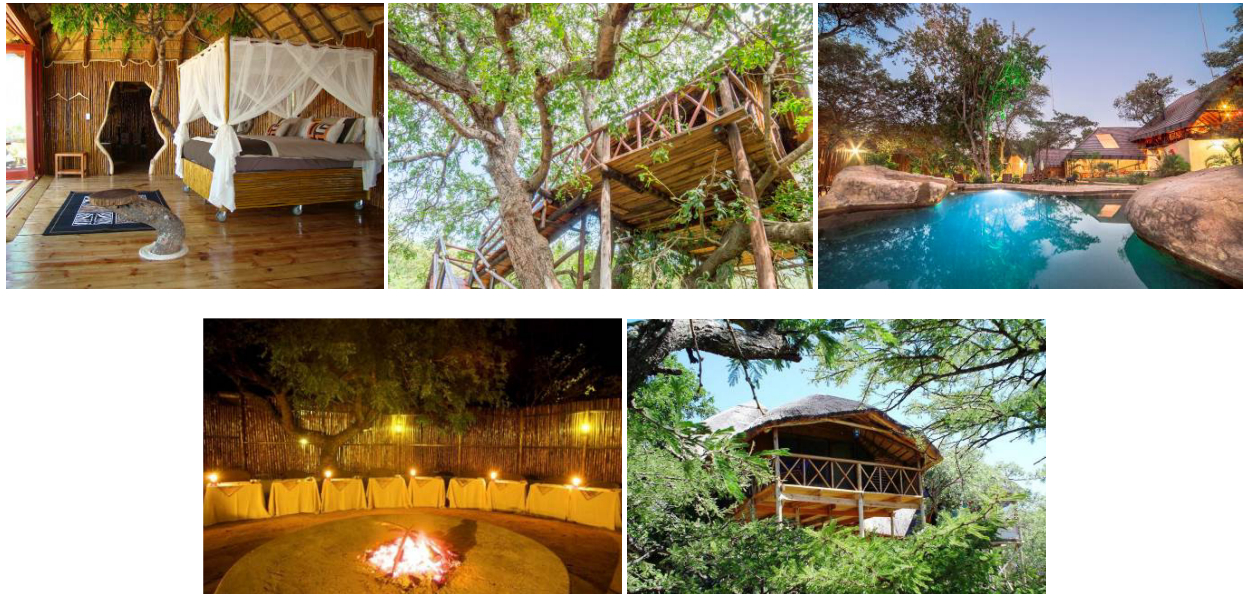
Pezulu is a small, exclusive tree house game lodge situated in the Kruger area of South Africa, it's the ideal place to escape from today's hectic world and to enjoy the tranquillity of the unspoilt African bush. Pezulu Tree House Lodge is a very unique one-of-a-kind lodge.

The Lodge comprises of ten unique tree houses, accommodating a maximum of thirty guests. Each unit has been built to blend with the environment whilst maintaining an element of luxury. The units have been built around the trees, resulting in huge branches which are still growing, passing through the tree houses. The thatched main building of the lodge is entwined around a large Marula tree. It consists of a cosy lounge with pool table, a dining area, a reception with curio shop and a charming treetop bar. The magnificent rock swimming pool is the perfect place to cool off during hot summer days. Relax on the comfortable pool lounges and hammocks.

Enjoy a sundowner from the superb lookout point while watching the African sunset over the stunning northern Drakensberg mountains. Or simply have a drink in the bar and reflect on the day passed in front of a blazing fire.

A delicious 3 course dinner (a mix of South African and European dishes), is served under the stars around a log fire in our beautiful boma.

The perfect place to stay and explore the Kruger National Park



WHAT'S EXCLUDED:

Drinks, optional activities and personal items

JOINING INFORMATION:

We pick from most Accommodation establishments in the Johannesburg area as well as Johannesburg Airport, please confirm the relevant times with your reservations agent. The journey to and from the lodge is in the comfort of an air-conditioned microbus.

TOUR END POINT:

You can be dropped off at your accommodation in Johannesburg or the Airport, if you are flying out the same day please book national flights for 8pm or after and international flights for 9pm or after.

ABOUT THE KRUGER:

Kruger National Park, in the Mpumalanga Province of South Africa, is among the world's greatest nature reserves. It is one of the few places on earth where wildlife can be seen in such great variety and at such close quarters. Some 520 bird, 114 reptile and 146 mammal species, including the fabled Big Five - elephant, rhino, lion, leopard and buffalo, densely populate the park. Although in nature there are no guarantees, in Kruger Park you stand the best chance of thrilling sightings of game. From some of Africa's largest prides of lion, to birds found nowhere else within the countries borders.

The present Kruger Park is immense, covering 19,685 km², an area almost the size of Wales or two thirds of Belgium. There are more than 3000 km of roads on which to explore the Park. Obviously in a limited time, one can do only so much, however our experience shows us which are the best roads to take at certain times of the year, ensuring you get the most of your visit to the Park. Our tour focuses mainly on the Central and Southern areas of the park, as it has the largest

concentration of game.

CLIMATE:

In winter (April to September) the days are mild (average about 23° C), with sometimes cool nights (down to 6° C). In the summer the days average 30° C, but sometimes exceed 40° C, with the welcome cooling effect of afternoon thunderstorms. Rain in the summer months (October - March i.e. "rainy season") varies from about 800mm in the south, to 500mm in the northern areas.

Should you have further questions, please feel free to contact us on the below details.

General Enquiries info@detourafrica.co.za

Toll Free US/Canada 1-800-287-0823

Toll Free UK 0-808-134-9963

Toll Free Australia 1-800-897-833

Other Countries + 27 21 424 1115

SAFARI NJEMA