

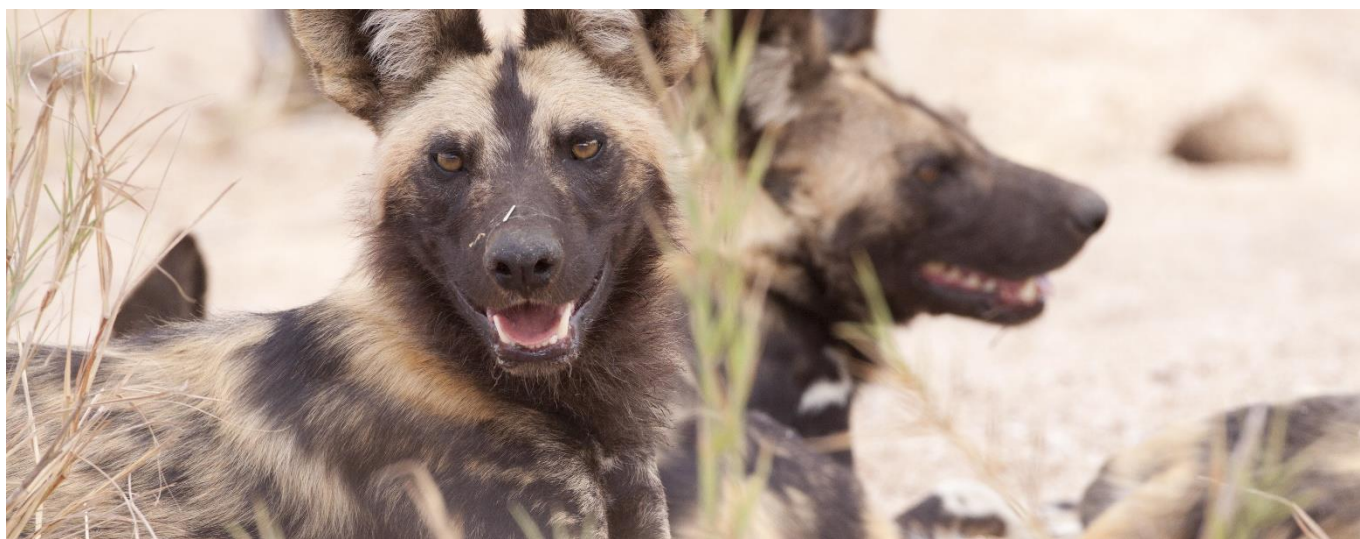


DETOUR AFRICA

Exploring Africa since 1999



3 Day Sabi Sands Luxury Safari



HIGHLIGHTS

A fantastic African Lodge experience. This luxury lodge is situated in the famous Sabi Sand private reserve which is open to the Kruger Park. (No fences). All safaris are conducted in open 4x4 vehicles which allows for excellent and up-close viewing of animals. Big 5 game walks allow an opportunity to track animals on foot. This safari is highly recommended for those looking for more comfort.

ITINERARY

3 Days
South Africa

DAY 1:
Nelspruit / Skukuza - Sabi Sands

After checking in there is ample time for lunch and to relax before partaking in an afternoon safari drive. All safari drives are conducted in open 4x4 vehicles which offer excellent viewing and photographic opportunities. Enjoy sundowners at sunset before heading back to the comfort of the lodge and dinner under the stars.

The lodge offers luxury accommodation in chalets are all tastefully and individually decorated with plush, African inspired decor, fabrics and furniture that welcome you to the South African bush.



www.dettourafrika.co.za

| Phone: +27 21 424 1115

| WhatsApp: +27 64 722 3617

SATSA
The Voice of Inbound Tourism

All rooms have baths, inside showers *and* refreshing outside showers, as well as private decks. These comfortable rooms offer a safe haven between activities and are each cooled with air-conditioning units. Mosquito nets cover all windows and doors, as well as the beds themselves. Wi-fi is available, and rooms have hairdryers and safes.

Accommodation:	En-suite Private Rooms
Included Activities:	Big 5 Open 4x4 Vehicle Game Drive
Meals included:	Lunch and Dinner

DAY 2: Sabi Sands

An early rise as you are greeted by your guide as you enjoy coffee and rusks before embarking on a day of exploration in the acclaimed Sabi Sands.

The morning safari leaves just after that and returns at 09h00 in time for a delicious breakfast. Should you wish to sleep-in, please leave your wooden giraffe on your patio when you retire. However, for interested guests, there is an enchanting bushwalk. This walk leaves reception at 11h00 with an armed ranger. Remember to bring a hat, extra sunscreen, good walking shoes, some water and your camera. The ranger will point out various animals and insects, trees and their medicinal values and other plants found in the bush.

On return to camp, guests can enjoy a dip in the pool or do some game viewing from one of the thatched game viewing decks in the garden or from their own private deck outside the rooms. There are always animals in the camp. Please speak to the rangers before approaching these. The resident nyala (a type of antelope) are used to being photographed but nevertheless, they are still wild and must be treated with caution.

Return to the lodge for another delicious African dinner before falling asleep to the sounds of the African bush.

Accommodation:	En-suite Private Rooms
Included Activities:	Morning & Afternoon Game Drive, Game Walk
Meals included:	Breakfast, Lunch and Dinner

DAY 3: Sabi Sands - Nelspruit / Skukuza

Enjoy a final sunrise game drive and a last chance to spot any of the animals you may have missed. After breakfast our safari adventure comes to an end

Included Activities:	Morning Game Drive & Walk
Meals included:	Breakfast

Tour Information

ACCOMMODATION:

This safari is situated in the Sabi Sand Private Game Reserve, adjoining the Kruger National Park in South Africa. This world-renowned reserve is known for conservation efforts, particularly in protecting rhino. The reserve is also extending its efforts to the community on the borders of the Sabi Sands, Mpumalanga, in uplifting and improving their conditions, as well as their understanding of the value of the reserve for the future. We are proud to be part of these good works.

The Game Reserve traverses approximately 10 000 hectares of wildlife area and is home to the big 5 animals, as well as a large variety of other animals. A great draw card for guests is the leopards, which are seen frequently.

The lodge has recently been refurbished and a lovely indoor-outdoor gazebo was added. This is a great chill out area for relaxing and enjoying the view on 3 sides. In fact, there are many areas to relax and unwind while in the luxury lodge, including the pool area, fire-pit, gazebo and at the fully stocked bar.



All the comfortable bedrooms have their own porch or deck with a view over the lodge gardens or bush, depending on the room, and wifi is available in all rooms and entertainment areas.



JOINING INFORMATION:

Transfer Rates: To/From Kruger Mpumalanga airport / Skukuza airport are available on request.

TOUR END POINT:

Transfer Rates: To/From Kruger Mpumalanga airport / Skukuza airport are available on request.

Arrivals are from 13h00, but ideally no later than 15h00.

Departures are after morning safari and breakfast at 10h30

WHAT'S INCLUDED:

Luxury accommodation in en-suite, air-conditioned suites

Activities as specified in the itinerary (2x Game Drives per Day and 1 Game Walk per day)

3 Full meals per day as specified in the itinerary

All teas and coffees

WHAT'S EXCLUDED:

Transfers between Nelspruit/Skukuza and the lodge – please enquire for rates if you need them

Optional activities

Sabi Sand and Kruger Park gate entry fees

Compulsory Rhino Levy

Bar bill, soft drinks

Curios, spa treatment and other items of a personal nature



ABOUT THE KRUGER:

Kruger National Park, in the Mpumalanga Province of South Africa, is among the world's greatest nature reserves. It is one of the few places on earth where wildlife can be seen in such great variety and at such close quarters. Some 520 bird, 114 reptile and 146 mammal species, including the fabled Big Five - elephant, rhino, lion, leopard and buffalo, densely populate the park. Although in nature there are no guarantees, in Kruger Park you stand the best chance of thrilling sightings of game. From some of Africa's largest prides of lion, to birds found nowhere else within the country's borders.

The present Kruger Park is immense, covering 19,685 km², an area almost the size of Wales or two thirds of Belgium. There are more than 3000 km of roads on which to explore the Park. Obviously in a limited time, one can do only so much, however our experience shows us which are the best roads to take at certain times of the year, ensuring you get the most of your visit to the Park. Our tour focuses mainly on the Central and Southern areas of the park, as it has the largest concentration of game.

CLIMATE:

In winter (April to September) the days are mild (average about 23° C), with sometimes cool nights (down to 6° C). In the summer the days average 30° C, but sometimes exceed 40° C, with the welcome cooling effect of afternoon thunderstorms. Rain in the summer months (October - March i.e. "rainy season") varies from about 800mm in the south, to 500mm in the northern areas.

Should you have further questions, please feel free to contact us on the below details:

General Enquiries & Reservations: info@detourafrica.co.za/

Website: www.detourafrica.co.za/

Phone: + 27 21 424 1115

WhatsApp: + 27 64 722 3617

Safari Njema – Enjoy your trip!

Keep posted by following us on Facebook, Instagram and Twitter. We post updates on relevant African travel news, special offers and other interesting travel tips and information.



SATSA 
The Voice of Inbound Tourism

We are member of SATSA (#1802) so you can be confident when booking with us that your money is safe and protected.

