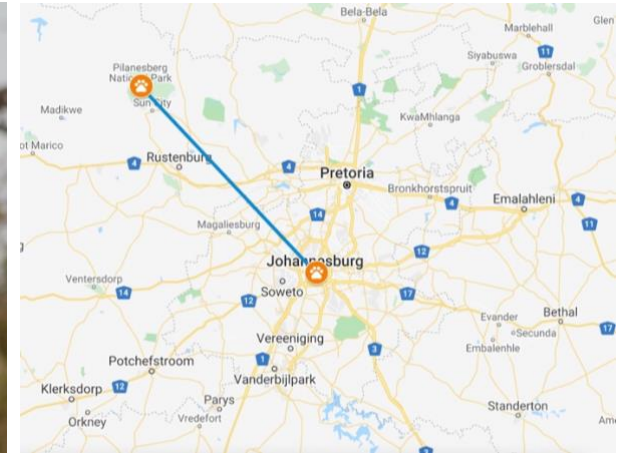
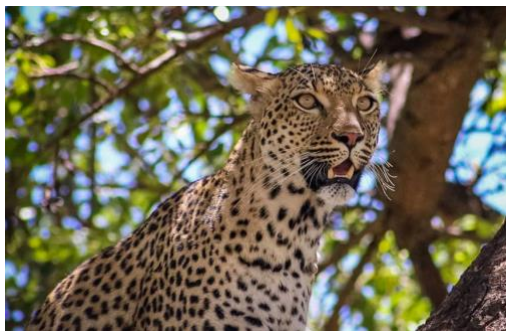


# PILANESBERG BIG 5 SAFARI

## 1 DAY | DAILY DEPARTURES



*An unforgettable Big 5 wildlife experience, just 2 hours outside of Johannesburg.  
Pilanesberg provides the perfect setting to indulge in an African Safari  
for those with limited time.*



### ITINERARY

- We depart Johannesburg/Pretoria between 05h30 – 06h00 am. We pick up from most hotels and guesthouse in the Johannesburg/Pretoria Area. On booking – your consultant will confirm the exact time.
- On arrival in Pilanesberg we embark on our first game drive. The game drive lasts 2-3 hours dependent on sightings. We search for animals stopping at waterholes and bird hides along the way. Have your cameras ready as Pilanesberg is known for good sightings all year round.
- At Approx. 12h30 we enjoy lunch at a restaurant in the park.
- After lunch we head out on another game drive to spot animals we missed during the morning. The game drive will end around 15h00 – 15h30.
- We head back to Johannesburg. Your guide will drop you off at your hotel at approx. 18h00.



# PILANESBERG BIG 5 SAFARI

## 1 DAY | DAILY DEPARTURES



### WHATS INCLUDED

All Ground Transportation  
Services of Experienced Qualified Driver/Guide  
2x Game Drives  
Light Lunch and One Standard Soft Drink

### WHATS EXCLUDED

Additional Drinks  
Personal Items  
Optional Activities

### COMMON QUESTIONS



#### What is an Open Vehicle?

Please see the image on the left which shows a vehicle with open sides. This is a good example of an open vehicle, the group size will determine the size of the vehicle, some are bigger than others.

#### What is a closed vehicle?

A closed vehicle is our standard Toyota minibus, please see the second picture on the left which shows a white minibus to give you a better idea.



#### Can I be picked up or dropped off at the airport?

We can organize this on a special request, please speak to your consultant.

#### Can I go to Sun City?

Yes, we can drop you off at Sun city after the morning game drive, in this case we would include the entrance fee to Sun City, but lunch would be for your own account.

### CONTACT US

**Should you have further questions, please feel free to contact us on the below details:**

**General Enquiries & Reservations:** [info@detourafrica.co.za/](mailto:info@detourafrica.co.za/)

**Website:** [www.detourafrica.co.za/](http://www.detourafrica.co.za/)

**Phone:** + 27 21 424 1115

**WhatsApp:** +27 60 018 6293



## PILANESBERG BIG 5 SAFARI 1 DAY | DAILY DEPARTURES



Keep posted by following us on Facebook, Instagram and Twitter. We post updates on relevant African travel news, special offers and other interesting travel tips and information.



We are member of SATSA (#1802) so you can be confident when booking with us that your money is safe and protected.

---

